

» 82,000 SF Available for Lease or Sale

BroadPoint
PARTNERS



2000 Dogwood Drive SE

CONYERS, GA 30013

Immediate access to I-20 East

LEASING CONTACTS

Bill Ward, III
+1.404.376.4885

bward@broadpoint-partners.com

Price Weaver
+1.404.3210.4981

pweaver@broadpoint-partners.com

» Property Details

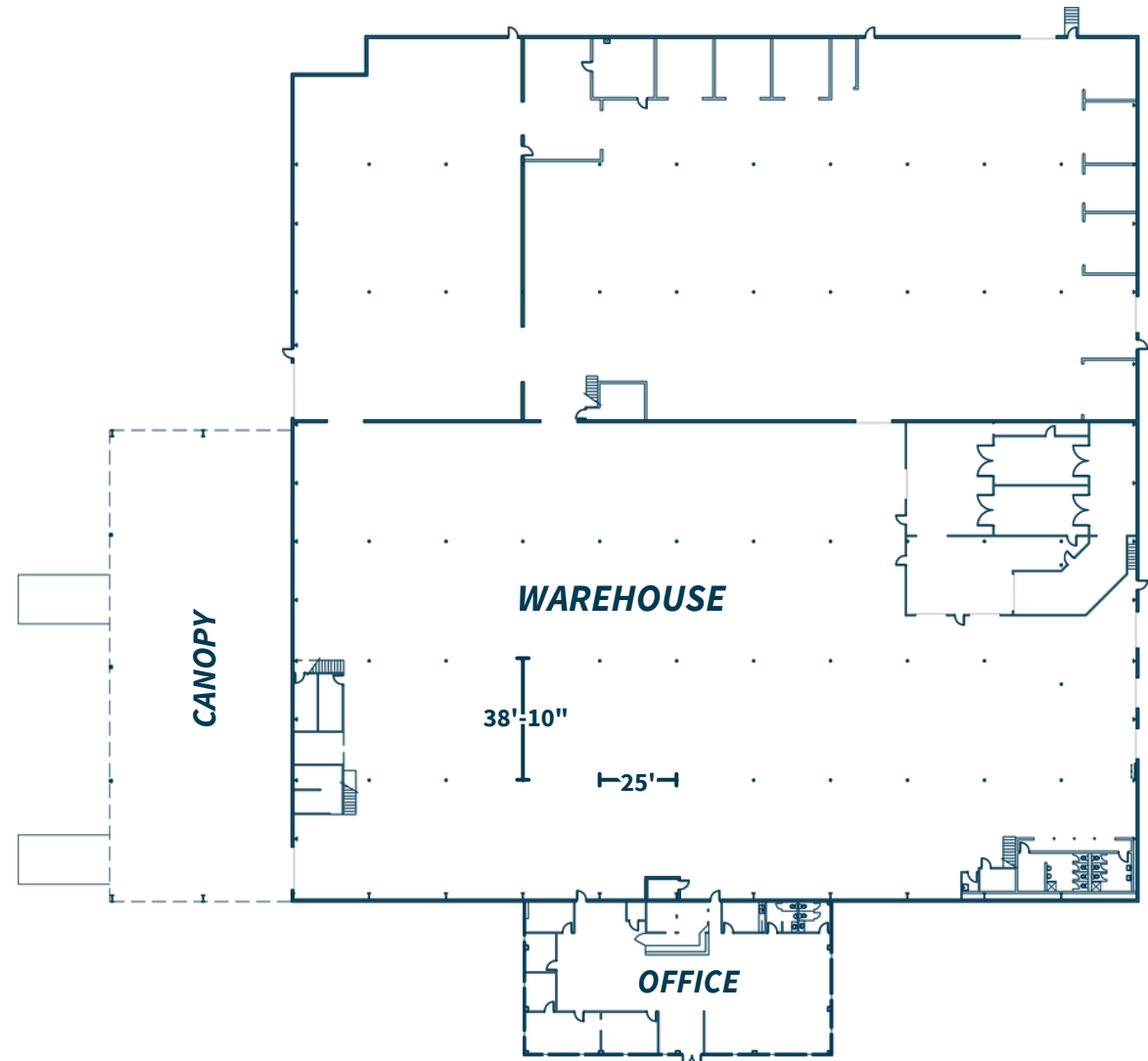
2000 Dogwood Drive SE

Conyers, GA 30013

Positioned on 7.02 acres with immediate access to I-20, **2000 Dogwood Drive SE** is an 82,000 SF cross-dock industrial facility offering efficient distribution capabilities in the Conyers submarket. The building features 24' clear heights, 3 dock doors, 5 drive-in doors, and 1,600A / 480V power, along with 5,012 SF of office and trailer parking availability. The property provides an ideal solution for users seeking functional warehouse space with strong interstate connectivity.

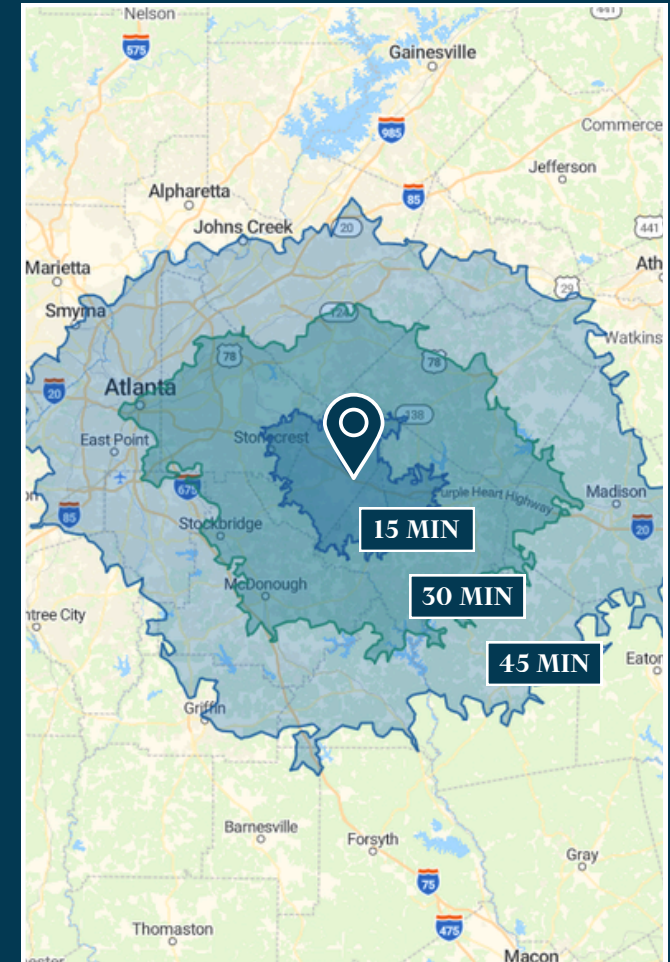
PROPERTY SPECIFICATIONS

Building Size	82,000 SF
Lot Size	7.02 AC
Office Size	5,012 SF
Year Built	1984
Building Configuration	Cross-dock
Clear Height	24'
Dock High Doors	3
Drive-In Doors	5 (12' x 14')
Auto Parking	40 spaces
Trailer Parking	Available
Sprinklers	Wet
Power	1,600A / 480V
Access	Immediate to I-20



» Access & Location Overview

2000 Dogwood Drive SE
Conyers, GA 30013



KEY DISTANCES

► INTERSTATES

Interstate 20 via Exit 84 **0.8 miles**
 Interstate 285 **17.5 miles**
 Interstate 75/85 **27 miles**

► AIRPORTS

Hartsfield-Jackson ATL **30 miles**

► INTERMODALS

CSX Hulsey Yard **26 miles**
 Norfolk Southern Inman **34 miles**

► CITIES

Downtown Atlanta **17 miles**

► PORTS

Port of Savannah **232 miles**
 Port of Charleston **272 miles**

» 82,000 SF Available for Lease or Sale



» 2000 Dogwood Drive SE

Owned By

 **ROOKER**

Leased By

BroadPoint
PARTNERS

Bill Ward, III

+1.404.376.4885

bward@broadpoint-partners.com

Price Weaver

+1.404.210.4981

pweaver@broadpoint-partners.com